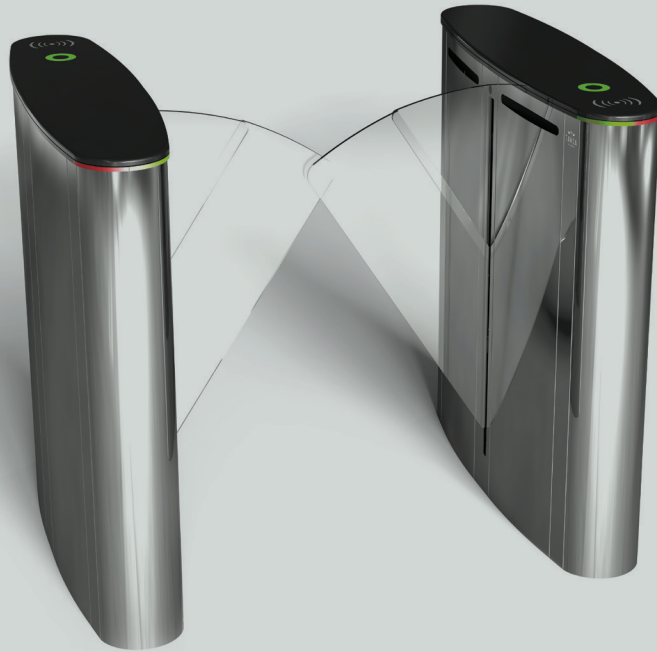


## LTOP 111H



### TECHNICAL SPECIFICATIONS

<b>Operation</b>	Controlled or control-free entrance/exit in both directions	<b>Sensors</b>	Each turnstile has 6 set of photo-electric sensors.
<b>IP standart</b>	IP44 (for indoor use)	<b>Safety Level Setting</b>	With two custom-defined safety levels, the unit can be set up to prevent and/or notify trespassing, reverse passage and unauthorized passages of any kind by means of an audio or stealth warning.
<b>Chassis</b>	AlSI 304 quality stainless steel, oval nose	<b>Operating Voltage</b>	220 VAC, 60 Hz
<b>Wings</b>	Angular dual wing with 8 mm tempered glass	<b>Power Consumption</b>	40 W during passages, 10 W during stand-by
<b>Upper Table</b>	10 mm Black Tempered Glass	<b>Operating Temperature</b>	-20°C / +50°C
<b>Functions</b>	Works bidirectionally and allows the passage of a single person only with its microprocessor control, electronic passage memory feature saves in memory card swipes that occur before a passage is completed and allows them to pass without closing the wings.	<b>Passage Speed</b>	25 persons / minute
<b>Mechanism</b>	With its mechanical torque control, the unit does not cause injury in the event of any jamming.	<b>Passage Width</b>	90 cm
<b>Emergency Mode</b>	Unit switches in to "emergency mode" with the signal received from the fire detection system in cases of emergency, opening wings to allow passage; with the optional battery supply, the wings automatically open during a power cut, allowing passage.	<b>Weight</b>	80 kg (Single Wing)
		<b>Security Level</b>	Deterrent
		<b>Areas of Use</b>	Suitable for indoor use

